

RAPTOR®

TOUGH PROTECTIVE COATINGS



Products you will need

HOW TO SPRAY A TRUCK BED

- 

APPLY 1ST COAT
Ensure you apply an even coat, avoiding excessive build in corners.
- 

SETTINGS
For the 1st coat, we set up the RAPTOR Gun at 3.5-4 BAR, at 20 inches from the substrate. Allow 60 mins between coats.
- 

60 MINS
ALLOW 60 MINS BETWEEN COATS.

APPLY 2ND COAT
To ensure an even application, increase the pressure to 4.5-5 BAR, at 25 inches for the 2nd coat.
- 

UNMASK
Once dry, the vehicle may be carefully unmasked.

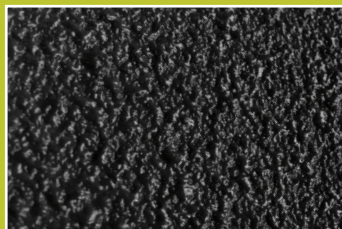
NOTES:

TEXTURE CAN BE VARIED. PLEASE REFER TO THE TEXTURES VIDEO FOR MORE INFORMATION.
WE CHOSE A COARSE DURABLE TEXTURE FOR THE TRUCK BED.

TOP TIPS:



We added Traction on the 2nd coat (1 bag per RAPTOR bottle).



Do not overload when using Traction. Heavy application will cause Traction to sink in the coating and not be as effective.



Note RAPTOR Traction is not compatible with the professional Vari-Nozzle Application Gun.



For maximum traction effect, we recommend a light drop coat from different angles.

WWW.RAPTORCOATINGS.COM

U-POL Ltd, 4th Floor, The Grange, 100 High Street, London N14 6BN.

T: +44 (0)20 8492 5900 E: uk.sales@u-pol.com

U-POL TECHNICAL SUPPORT:

+44 (0) 1933 230310